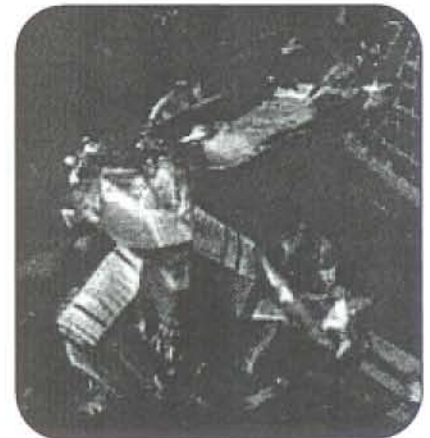
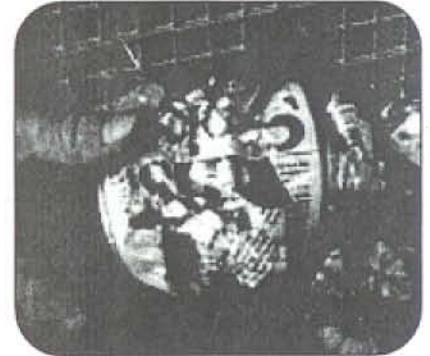
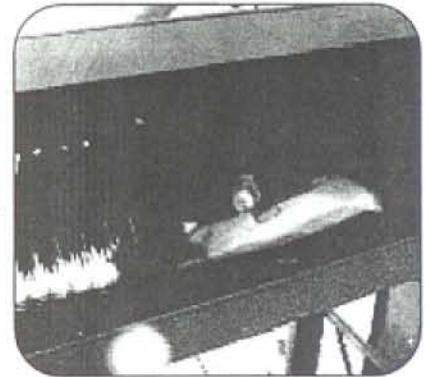


# ELIMINATOR™

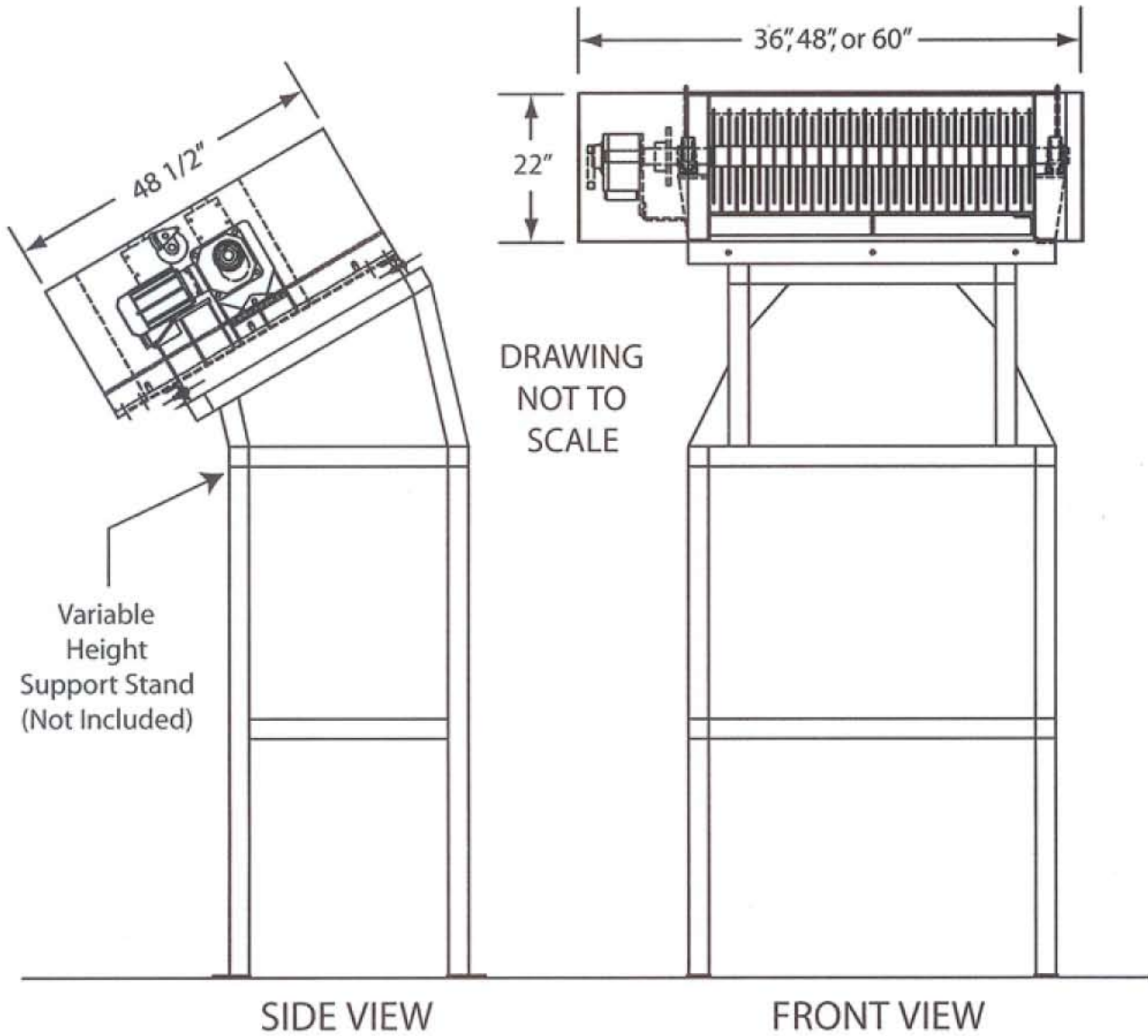
*Marathon's Perforator for Plastic Bottles & Aluminum Cans*

## General Specifications

- Performance . . . . . Process HDPE, PET, UBC, steel & aluminum cans; full or empty, with or without lids
- Models . . . . . 36", 48" and 60" wide (feed opening)
- Motor . . . . . 2, 3 and 5 HP (mounted to in-feed shaft and secondary shaft – chain driven)
- Perforator Blades . . . . . 2 interlocking sets of 1/4" thick 14" dia. made from T1 steel
- Teeth . . . . . Flame hardened
- In-feed Shaft . . . . . 30-60 RPM
- Secondary Shaft . . . . . 38-75 RPM
- (Shaft speed depends on application and may vary with feed conveyor speed)*
- Bearings . . . . . 2-7/16" dia. pillowblock with extended grease tubes for easy maintenance
- Blade Drive Shaft . . . . . 2-3/4" dia. solid steel shaft
- Stand & Hopper . . . . . Designed to customer's application
- Unit Weight . . . . . Approx. 3500 lbs.  
(48" unit with stand and hopper)
- Other Features . . . . . Hinged and removable covers for easy shaft removal and maintenance
- Optional Equipment . . . Corrosion resistant Browning Bev Gold bearings; Variable speed



# Eliminator Dimensions:



1-800-464-3095



Pictures in this literature are illustrative only. Specifications are subject to change without notice in order to accommodate improvements to the equipment. Certified in compliance with ANSI and OSHA standards. Products must be used with safe practice and in accordance with regulations and standards.