

Closed-End Horizontal Balers



NEXGEN

Gives You More for Your Baler Dollar!

■ MULTI-MATERIAL PROCESSING

Closed-End Balers process a wide variety of material. One model will process up to 20 tons of OCC in a typical day's shift.

■ ROTARY BALE LENGTH GAUGE & BALE MADE LIGHT

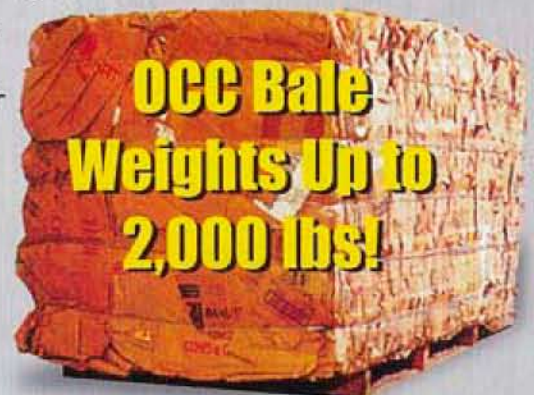
The Rotary Bale Length Gauge activates the Bale Made Light automatically with no flag pole to engage or disengage.

■ PHOTO ELECTRIC EYE

A photo-eye facilitates automatic operation and unattended baling.

OTHER FEATURES

- Heavy-duty, spring loaded retainer locks
- Reversible and replaceable ram shear blade
- Serrated body shear blade
- Programmable controller
- Chute or hand feed hopper
- Heavy-duty power pack with 20 or 30 HP TEFC motor and key operated start on/off switch
- 460 volt with power disconnect switch
- Center position valve, 10 micron return line filter and 100 mesh suction line strainer
- Audio/visual start-up alarm
- Turnkey installations by factory trained representatives



Specifications **NEXGEN** Standard Closed-End Horizontal Balers

Models	CE-504842-830	CE-504242-830	CE-503042-830	CE-503042-720	CE-303042-720	CE-303042-620-E*
Bale Size	48" x 42" x 72" 1219 x 1067 x 1829mm	42" x 42" x 72" 1067 x 1067 x 1829mm	30" x 42" x 72" 762 x 1067 x 1829mm	30" x 42" x 72" 762 x 1067 x 1829mm	30" x 42" x 72" 762 x 1067 x 1829mm	30" x 42" x 72" 762 x 1067 x 1829mm
Feed Chamber	50"L x 48"W 1270 x 1219mm	50"L x 42"W 1270 x 1067mm	50"L x 30"W 1270 x 762mm	50"L x 30"W 1270 x 762mm	30"L x 30"W 762 x 762mm	30"L x 30"W 762 x 762mm
Bale Weight (OCC)	1800 - 2000 lbs. 817 - 907 kg	1600 - 1800 lbs. 726 - 817 kg	1300 - 1500 lbs. 590 - 680 kg	1200 - 1400 lbs. 544 - 635 kg	1200 - 1400 lbs. 544 - 635 kg	1100 - 1300 lbs. 499 - 590 kg
Bale Wires (OCC)	5 @11ga. 21' long	5 @11ga. 20' long	5 @11ga. 18' long	5 @11ga. 18' long	5 @11ga. 18' long	5 @11ga. 18' long

Performance**

Cycle Time	20 sec.	20 sec.	20 sec.	22 sec.	16 sec.	30 sec.
Platen Force	125,700 lbs. 559 kN	125,700 lbs. 559 kN	125,700 lbs. 559 kN	96,200 lbs. 428 kN	96,200 lbs. 428 kN	70,700 lbs. 315 kN
Platen Pressure	63.9 psi 440.6 kPa	73.0 psi 503.3 kPa	102.2 psi 704.7 kPa	78.2 psi 539.2 kPa	78.2 psi 539.2 kPa	57.5 psi 396.5 kPa
Penetration	16" 406mm	16" 406mm	16" 406mm	16" 406mm	16" 406mm	16" 406mm

Hydraulic & Electrical

Standard Motor	30 hp 22.4 kW	30 hp 22.4 kW	30 hp 22.4 kW	20 hp 14.9 kW	20 hp 14.9 kW	20 hp 14.9 kW
Standard Pump	75 gpm 284 L/min	75 gpm 284 L/min	75 gpm 284 L/min	49 gpm 185.5 L/min	49 gpm 185.5 L/min	18.5 gpm 70 L/min
Pump Type	Vane	Vane	Vane	Vane	Vane	Gear
Operating Pressure	2500 psi 172 bar	2500 psi 172 bar	2500 psi 172 bar	2500 psi 172 bar	2500 psi 172 bar	2500 psi 172 bar
Cylinder Bore	8" (203mm)	8" (203mm)	8" (203mm)	7" (178mm)	7" (178mm)	6" (152mm)
Cylinder Rod	4.5" (114mm)	4.5" (114mm)	4.5" (114mm)	4.5" (114mm)	4.5" (114mm)	4" (102mm)
Cylinder Stroke	68" (1727mm)	68" (1727mm)	68" (1727mm)	68" (1727mm)	48" (1219mm)	48" (1219mm)
Reservoir Capacity	150 gal 567.75 lit	150 gal 567.75 lit	150 gal 567.75 lit	150 gal 567.75 lit	150 gal 567.75 lit	55 gal 208.18 lit

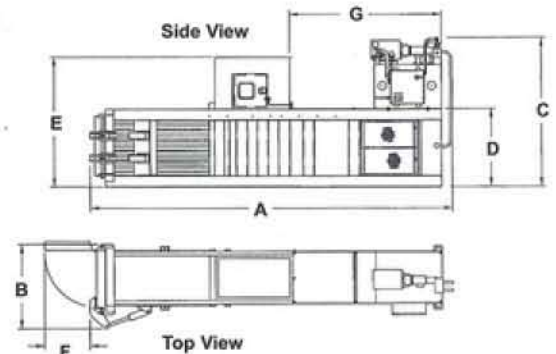
*Certain standard features are not available on the 620E Series

**Certification applies to performance specs only.

Dimensions

	A	B	C	D	E	F	G	Weight
CE-504842-830	20'-5" 6223mm	77" 1956mm	105" 2667mm	55" 1397mm	92" 2337mm	50" 1270mm	97" 2464mm	16,100 lbs. 7303 kg
CE-504242-830	20'-5" 6223mm	71" 1956mm	105" 2667mm	55" 1397mm	92" 2337mm	44" 1118mm	97" 2464mm	15,300 lbs. 6940 kg
CE-503042-830	20'-5" 6223mm	59" 1499mm	105" 2667mm	55" 1397mm	92" 2337mm	32" 813mm	97" 2464mm	13,200 lbs. 5988 kg
CE-503042-720	20'-5" 6223mm	59" 1499mm	105" 2667mm	55" 1397mm	92" 2337mm	32" 813mm	97" 2464mm	13,000 lbs. 5997 kg
CE-303042-720	18'-9" 5715mm	59" 1499mm	105" 2667mm	55" 1397mm	92" 2337mm	32" 813mm	97" 2464mm	12,300 lbs. 5579 kg
CE-303042-620-E	18'-9" 5715mm	59" 1499mm	88" 2235mm	55" 1397mm	92" 2337mm	32" 813mm	97" 2464mm	11,400 lbs. 5171 kg

Material Thickness: Ram Face: 3/8" PL with 1" bars (1/4" PL on 620-E models); Ram Bottom, Bottom Liner, Ram Top, Floor, Floor Liner, and Charge Chamber Side: 3/8"; Bale Chamber Sides 1/4".



NEXGEN's Closed-End Balers are available with a variety of optional equipment such as Cart Dumper and Conveyor feed systems

Other Options: Carts, Tongue & Groove Floor/Ram, Bale Wire, Conveyor Control Options, Accessory Control Option, Material Selector Switch, Remote Control Station, Remote Power Pack, Special Paint, Oil Cooler, Immersion Oil Heater, Oil Temperature Shut Down, Low Oil Shut Down, Sonic Sensor, Upper Photo Cell, Custom Bale Chamber Sizes, Custom Designed Hopper, Custom Clear Top Opening Sizes, etc.

Authorized NEXGEN Dealer:

1-800-464-3095

Pictures in this literature are illustrative only. Specifications are subject to change without notice in order to accommodate improvements to the equipment. Certified in compliance with ANSI Regulation Z245.5 and all OSHA standards. Products must be used with safe practice and in accordance with said regulations and standards.

